

Empress ward information

Last updated: May 2021
Produced by: Policy and Communications
Contact: policy@rushmoor.gov.uk

Contents	Page
Local democracy	1
Map of Empress	2
Resident survey results	3
Ward population and makeup 2011	4
Deprivation breakdown	7

Local democracy

Rushmoor Borough Council ward councillors for Empress:

Member	Party	Year elected
Councillor Marina Munro	Conservative	2021
Councillor Adrian Newell	Conservative	2019
Councillor Mike Smith	Conservative	2018

Member(s) of the County Council for Empress ward:

Member	Party	Year elected
County Councillor Adam Jackman (part)	Conservative	2021
County Councillor Roz Chadd (part)	Conservative	2021

Member of Parliament for Aldershot Constituency:

Member of Parliament	Party	Year elected
Leo Docherty	Conservative	2019

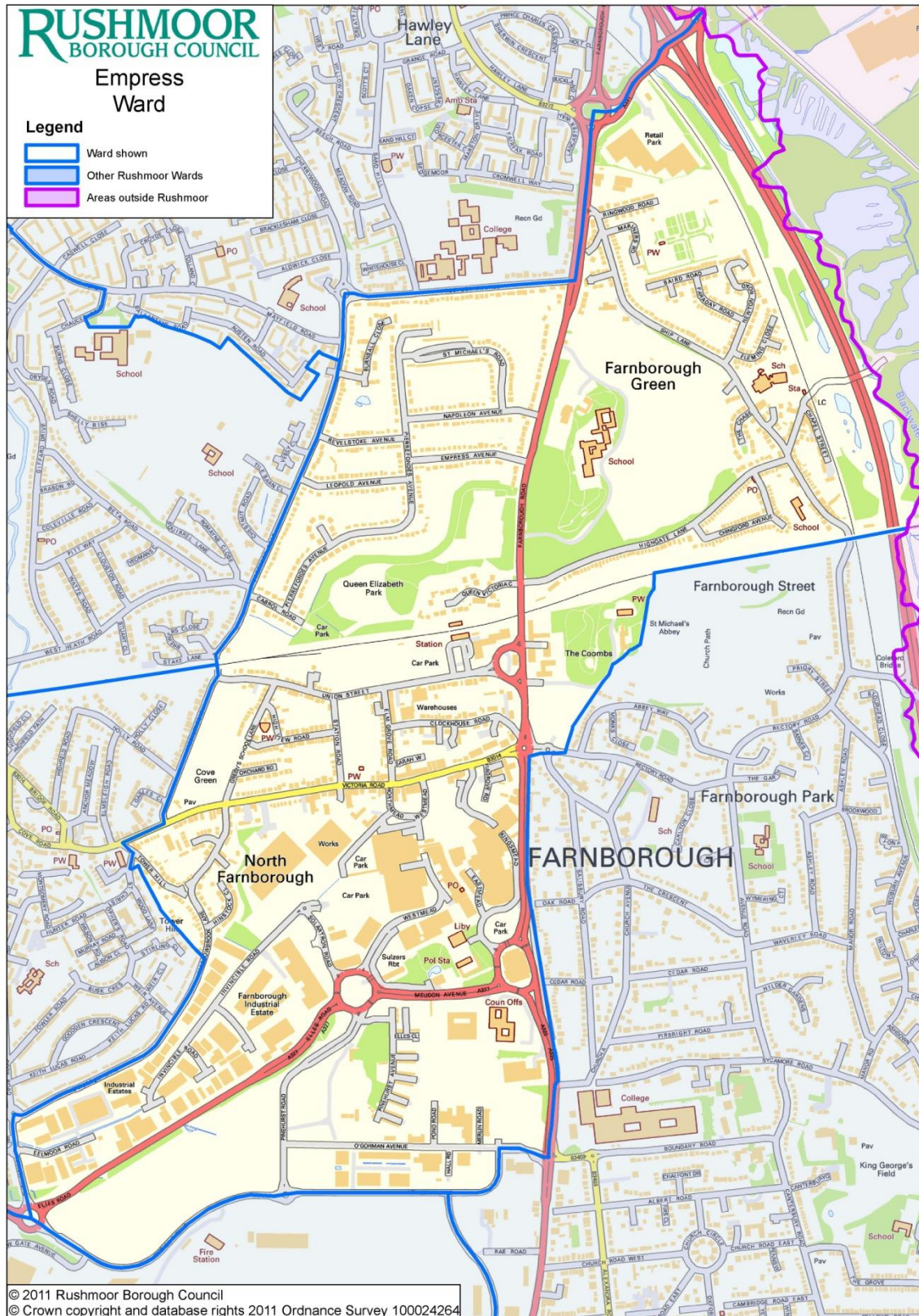
Election Turnout

Date	Type	Election Turnout for Empress ward
6 th May 2021	Local elections	40.6%

More information can be found on Rushmoor's web site at
<http://www.rushmoor.gov.uk/article/4607/Empress>

Map of Empress

Empress covers Farnborough town centre. It extends north bounded by Prospect Road and Prospect Avenue and east, bounded by the railway and Farnborough Road.



Resident survey results

The last Rushmoor Borough Council residents' survey was carried out in 2018 with 1,046 surveys returned. The survey was an online survey and we know that 77 residents in Empress ward filled in the survey. Below is a summary of the results for Empress ward.

Satisfaction with Rushmoor (Aldershot and Farnborough) as a place to live (with 1 being very dissatisfied and 10 being very satisfied)

	All responses	Farnborough	Empress
Average score	5.84	6.34	5.89

Respondents from Empress ward have a lower satisfaction with Rushmoor as a place to live than the respondents from Farnborough but a higher satisfaction than all respondents to the survey.

Top factor in making somewhere good to live

All responses	Farnborough	Empress
The level of crime	The level of crime	Health services

The top factor from the respondents from Empress ward to making somewhere good to live is health services, this is different to the respondents from Farnborough and all the respondents to the survey, who indicated that the level of crime was the top factor.

Top factor that needs improving in the local area

All responses	Farnborough	Empress
Road and pavement repairs	Road and pavement repairs	Shopping facilities

The top factor from the respondents from Empress ward that needs improving the most is shopping facilities, this is different to the respondents from Farnborough and all the respondents to the survey, who indicated that road and pavement repairs was the top factor needing improving.

Satisfaction with Rushmoor Borough Council (with 1 being very dissatisfied and 10 being very satisfied)

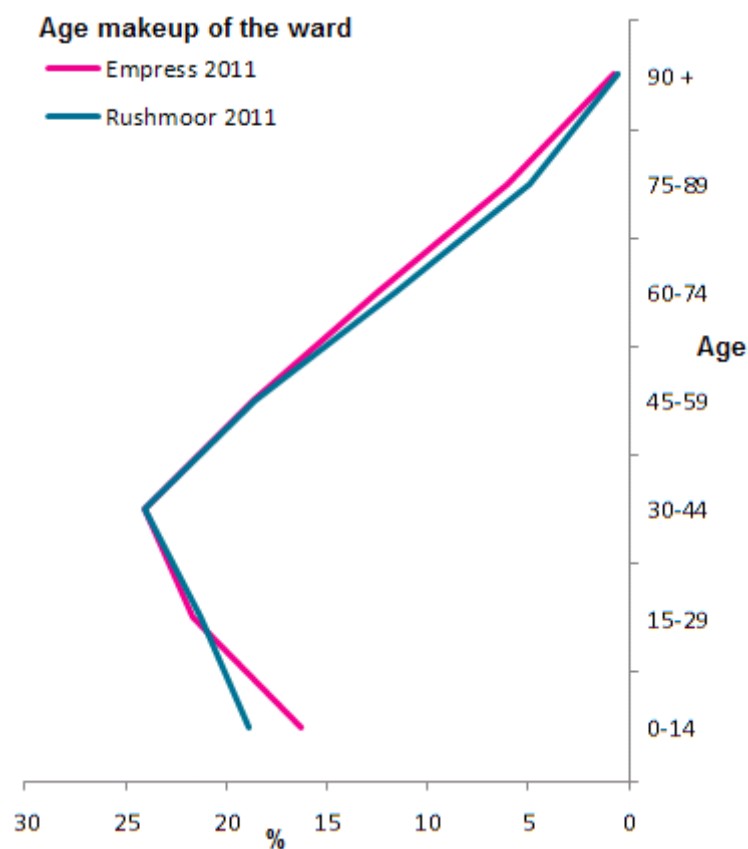
	Rushmoor	Farnborough	Empress
Average score	6.32	6.59	6.60

Respondents from Empress ward have a higher satisfaction with the council than the respondents from Farnborough and all the respondents to the survey.

Ward population and makeup 2011

The following data is from the 2011 Census

- **Population:** Empress ward has a population of approximately 5,570, which accounts for about 5.9% of the population of Rushmoor.
- **Age:** Empress has a slightly lower percentage of 0-15 year olds (16.3%) than Rushmoor as a whole (18.9%).



(Source: Office for National Statistics)

- **Religion:** There is a slightly higher percentage of residents in Empress ward with “no religion” and a slightly lower percentage of Buddhists and Hindus, when compared to Rushmoor as a whole.

Religion (%)	Christian	Buddhist	Hindu	Jewish	Muslim	Sikh	Other religion	No religion	Not stated
Empress	56.9	1.2	2.5	0.1	1.5	0.3	0.4	29.3	7.7
Rushmoor	57.8	3.3	3.4	0.1	1.4	0.2	0.4	26.4	7.0

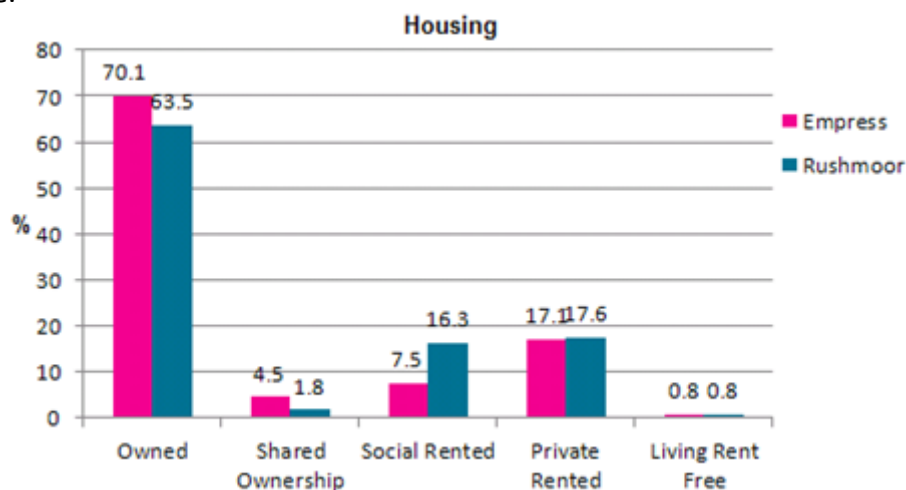
(Source: Office for National Statistics)

- **Ethnicity:** Empress ward has a lower percentage of a Asian/Asian British: Other Asian than Rushmoor as a whole.

Ethnicity (%)	Empress	Rushmoor
White: English/Welsh/Scottish/Northern Irish/British	83.0	80.5
White: Irish	1.2	0.8
White: Gypsy or Irish Traveller	0.1	0.2
White: Other	4.4	3.3
Mixed/multiple ethnic group: White and Black Caribbean	0.7	0.7
Mixed/multiple ethnic group: White and Black African	0.2	0.4
Mixed/multiple ethnic group: White and Asian	0.7	0.7
Mixed/multiple ethnic group: Other Mixed	0.4	0.5
Asian/Asian British: Indian or British Indian	2.5	1.4
Asian/Asian British: Pakistani or British Pakistani	0.5	0.7
Asian/Asian British: Bangladeshi, British Bangladeshi	0.5	0.2
Asian/Asian British: Chinese	1.3	0.5
Asian/Asian British: Other Asian	2.9	7.6
Black/African/Caribbean/Black British: African	0.4	1.2
Black/African/Caribbean/Black British: Caribbean	0.5	0.6
Black/African/Caribbean/Black British: Other Black	0.2	0.2
Other ethnic group: Arab	0.2	0.1
Other ethnic group: Any other ethnic group	0.3	0.5

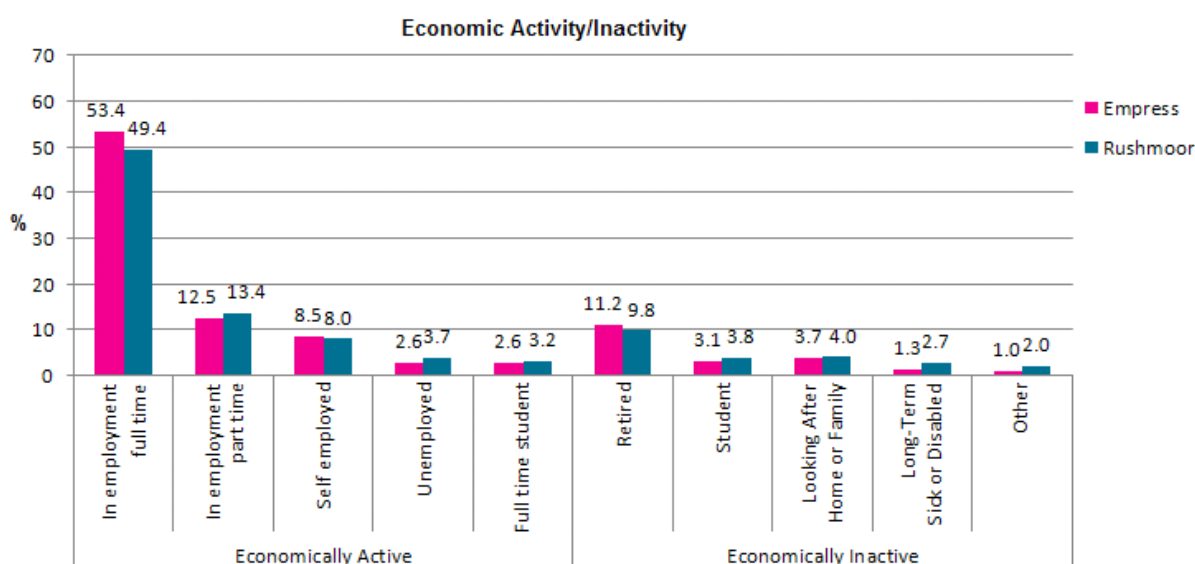
(Source: Office for National Statistics)

- **Housing:** A higher percentage of residents in Empress own their own homes and less rent from social landlords (housing associations), compared with Rushmoor as a whole.

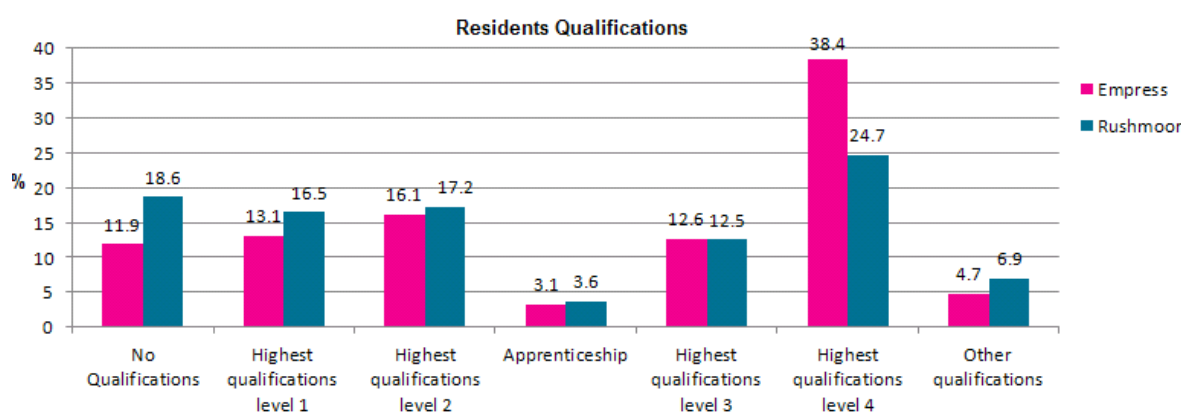


(Source: Office for National Statistics)

- **Economic Activity/Inactivity:** Empress ward has a slightly higher percentage of full time workers and retired people, when compared to Rushmoor as a whole.



- **Qualifications:** A higher percentage of Empress residents have the highest level of qualifications, when compared to Rushmoor as a whole.



Level 1 qualifications cover: 1-4 O Levels/CSE/GCSEs (any grades), Entry Level, Foundation Diploma, NVQ level 1, Foundation GNVQ, Basic/Essential Skills.

Level 2 qualifications cover: 5+ O Level (Passes)/CSEs (Grade 1)/GCSEs (Grades A*-C), School Certificate, 1 A Level/ 2-3 AS Levels/VCEs, Intermediate/Higher Diploma, Welsh Baccalaureate Intermediate Diploma, NVQ level 2, Intermediate GNVQ, City and Guilds Craft, BTEC First/General Diploma, RSA Diploma.

Level 3 Qualifications cover: 2+ A Levels/VCEs, 4+ AS Levels, Higher School Certificate, Progression/Advanced Diploma, Welsh Baccalaureate Advance Diploma, NVQ Level 3; Advanced GNVQ, City and Guilds Advanced Craft, ONC, OND, BTEC National, RSA Advanced Diploma.

Level 4 and above qualifications cover: Degree (BA, BSc), Higher Degree (MA, PhD, PGCE), NVQ Level 4-5, HNC, HND, RSA Higher Diploma, BTEC Higher level, Professional Qualifications (Teaching, Nursing, Accountancy).

Other Qualifications cover: Vocational/Work-related Qualifications, Foreign Qualifications(Not stated/ level unknown).

(Source: Office for National Statistics)

- **Health:** A slightly higher percentage of Empress residents reported very good health, when compared to Rushmoor as a whole.

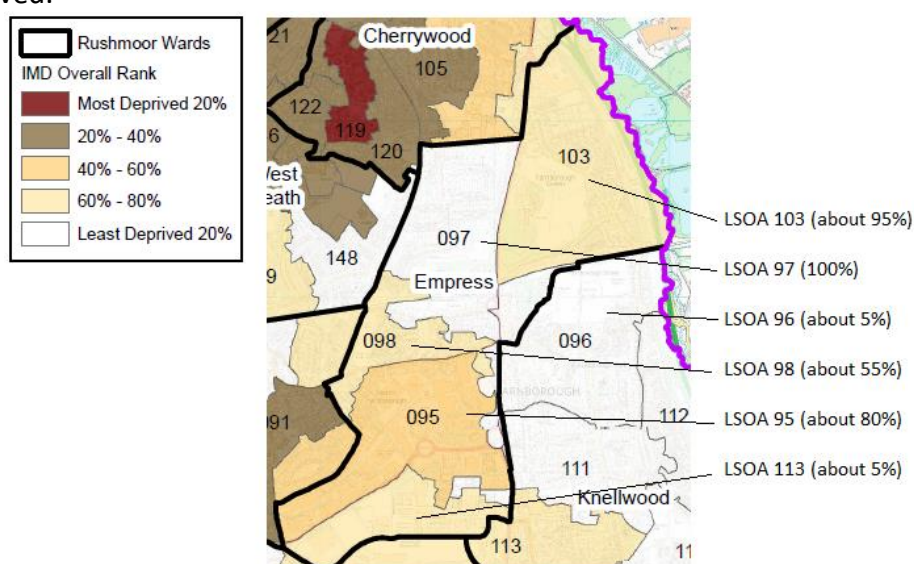
	Very Good Health	Good Health	Fair Health	Bad Health	Very Bad Health
Empress	52.6%	35.9%	9.0%	2.1%	0.3%
Rushmoor	50.1%	35.5%	10.8%	2.8%	0.8%

(Source: Office for National Statistics)

Deprivation breakdown

The Government's Index of Multiple Deprivation (IMD) 2019 provides a relative deprivation score for each small area in England, it covers a range of economic, social and housing issues. The overall score is calculated using data from seven domains. Most of indicator data has come from 2015 and 2016 and some of the data is from the 2011 Census. The Indices of Deprivation cover geographical areas that are called Lower-layer Super Output Area level (LSOA), of which there are 32,844 in the country. There are a total of 58 LSOAs in Rushmoor.

Unfortunately, LSOAs and the council's wards do not exactly line up. In Empress ward there are all or part of six LSOAs. The following map shows the number of the LSOAs in Empress ward and the approximate percentage of the LSOA in the ward. Each LSOA is ranked in order against all other LSOA in the country, where 1 is the most deprived and 32,844 is the least deprived.



LSOA Code	Approx % in Ward	Index of Multiple Deprivation (IMD) 2019	Income	Employment	Education, Skills and Training	Health Deprivation and Disability	Crime	Barriers to Housing and Services	Living Environment
97	100%	29363	30389	30081	29954	25205	10408	24340	19422
103	95%	24475	25581	31961	25934	27856	6265	11198	14502
95	80%	14324	13148	15893	11061	15716	12759	10523	13924
98	55%	20864	20606	25937	18192	21947	6063	18117	13781
96	5%	31468	25169	29927	29453	30972	22628	27371	25576
113	5%	22027	22835	18560	24935	11580	24759	13965	20716

For comparison purposes below is the mean average results for a LSOA in Rushmoor

Average	19887	18826	21461	16538	17925	16645	14986	21641
---------	-------	-------	-------	-------	-------	-------	-------	-------

Empress ward has no areas of multiple deprivation (in the 20% most deprived) but LSOAs 103 and 98 are in the 20% most deprived areas in the England for the Crime domain.