

St John's ward information

Last updated: May 2021
Produced by: Policy and Communications
Contact: policy@rushmoor.gov.uk

Contents	Page
Local democracy	1
Map of St John's	2
Resident survey results	3
Ward population and makeup 2011	4
Deprivation breakdown	7

Local democracy

Rushmoor Borough Council ward councillors for St John's:

Member	Party	Year elected
Councillor Jonathan Canty	Conservative	2021
Councillor Peter Cullum	Conservative	2019
Councillor Jacqui Vosper	Conservative	2018

Member(s) of the County Council for St John's ward:

Member	Party	Year elected
County Councillor Rod Cooper	Conservative	2021

Member of Parliament for Aldershot Constituency:

Member of Parliament	Party	Year elected
Leo Docherty	Conservative	2019

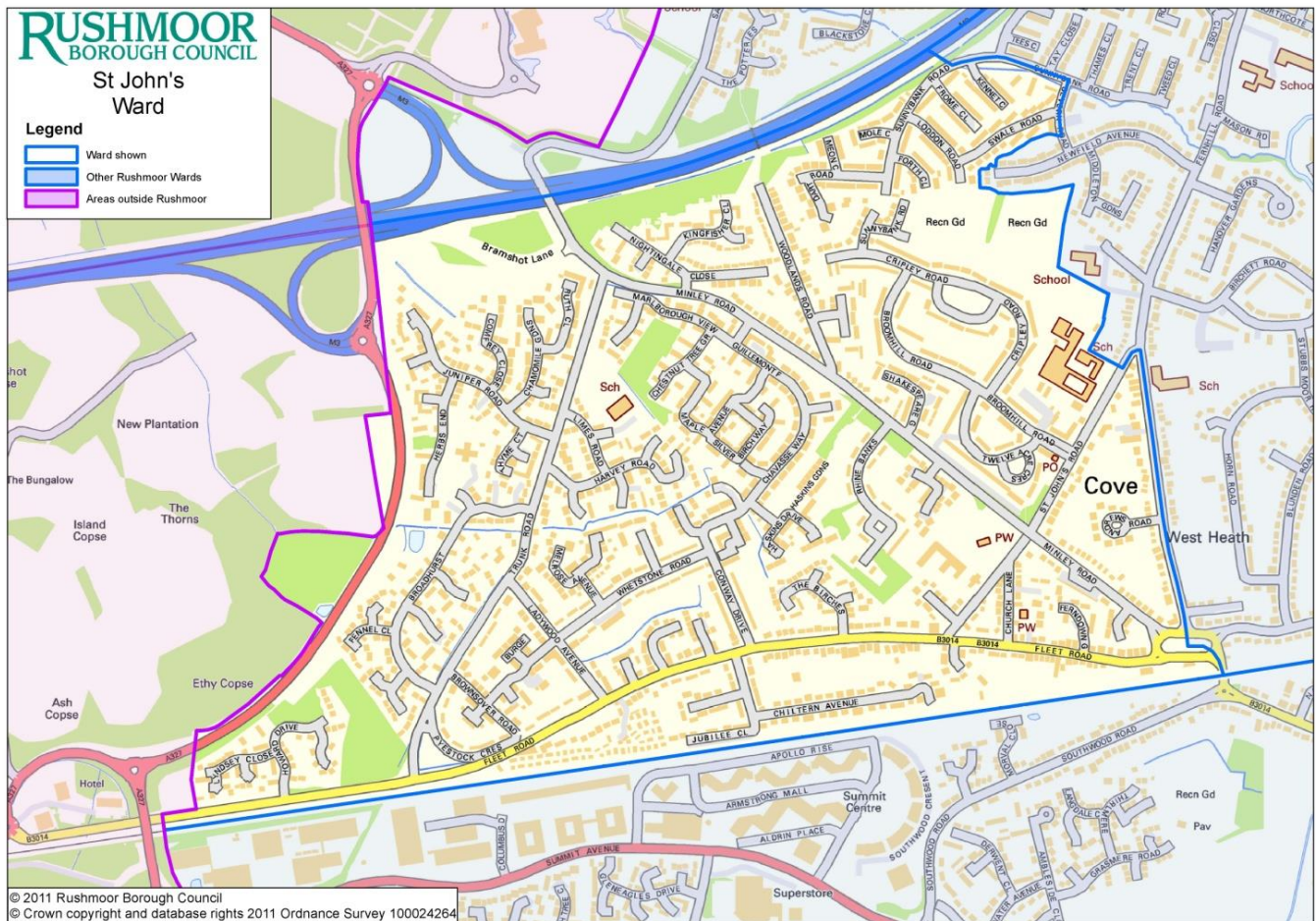
Election Turnout

Date	Type	Election Turnout for St John's ward
6 th May 2021	Local elections	34.5%

More information can be found on Rushmoor's web site at
<http://www.rushmoor.gov.uk/article/4605/St-Johns>

Map of St John's

St John's covers the west of Farnborough, between the railway and the M3. Minley Road runs through the centre of the ward.



Resident survey results

The last Rushmoor Borough Council residents' survey was carried out in 2018 with 1,046 surveys returned. The survey was an online survey and we know that 59 residents in St. Johns ward filled in the survey. Below is a summary of the results for St. Johns ward.

Satisfaction with Rushmoor (Aldershot and Farnborough) as a place to live (with 1 being very dissatisfied and 10 being very satisfied)

	All responses	Farnborough	St. Johns
Average score	5.84	6.34	6.80

Respondents from St. Johns ward have a higher satisfaction with Rushmoor as a place to live than the respondents from Farnborough and all respondents to the survey.

Top factor in making somewhere good to live

All responses	Farnborough	St. Johns
The level of crime	The level of crime	The level of crime

There is no difference in what the top factor is from the respondents from St. Johns ward, to the respondents from Farnborough and all the respondents to the survey.

Top factor that needs improving in the local area

All responses	Farnborough	St. Johns
Road and pavement repairs	Road and pavement repairs	Road and pavement repairs

There is no difference in what the top factor is from the respondents from St. Johns ward, to the respondents from Farnborough and all the respondents to the survey.

Satisfaction with Rushmoor Borough Council (with 1 being very dissatisfied and 10 being very satisfied)

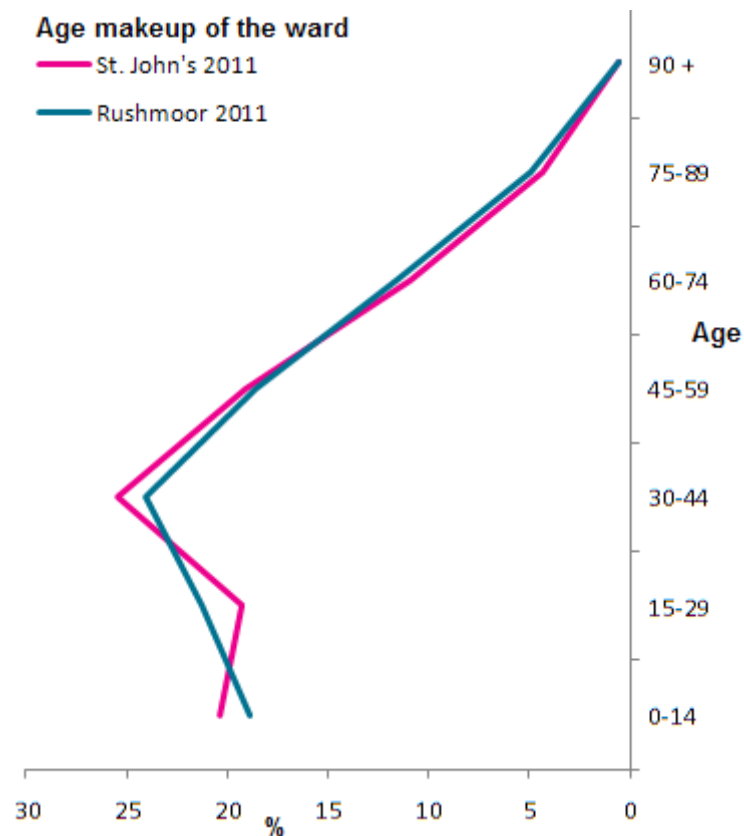
	Rushmoor	Farnborough	St. Johns
Average score	6.32	6.59	6.57

Respondents from St. Johns ward have a lower satisfaction with the council than the respondents from Farnborough, but a higher satisfaction than all the respondents to the survey.

Ward population and makeup 2011

The following data is from the 2011 Census

- **Population:** St John's ward has a population of approximately 7,143, which accounts for about 7.6% of the population of Rushmoor.
- **Age:** St John's has slightly less 15-29 and slightly more 0-14 and 30-44 year olds, than Rushmoor as a whole.



(Source: Office for National Statistics)

- **Religion:** There is a slightly lower percentage of Buddhists and Hindus, when compared to Rushmoor as a whole.

Religion (%)	Christian	Buddhist	Hindu	Jewish	Muslim	Sikh	Other religion	No religion	Not stated
St John's	59.6	1.2	1.7	0.0	0.8	0.5	0.3	28.6	7.3
Rushmoor	57.8	3.3	3.4	0.1	1.4	0.2	0.4	26.4	7.0

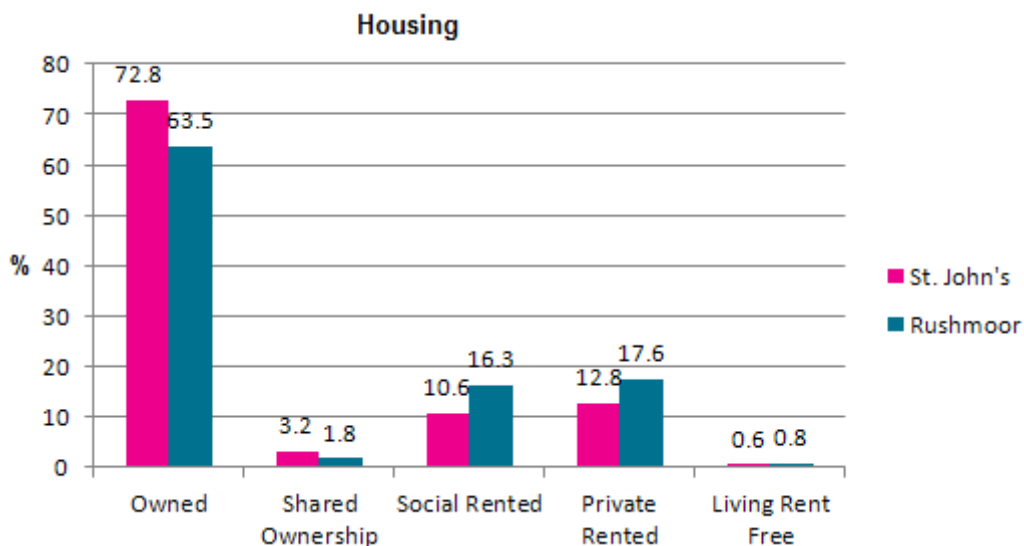
(Source: Office for National Statistics)

- **Ethnicity:** St John's ward has a higher percentage of White: English/Welsh/Scottish /Northern Irish/British than Rushmoor as a whole, and fewer Asian/Asian British: Other Asian.

Ethnicity (%)	St John's	Rushmoor
White: English/Welsh/Scottish/Northern Irish/British	86.9	80.5
White: Irish	0.6	0.8
White: Gypsy or Irish Traveller	0.2	0.2
White: Other	3.4	3.3
Mixed/multiple ethnic group: White and Black Caribbean	0.4	0.7
Mixed/multiple ethnic group: White and Black African	0.4	0.4
Mixed/multiple ethnic group: White and Asian	0.7	0.7
Mixed/multiple ethnic group: Other Mixed	0.5	0.5
Asian/Asian British: Indian or British Indian	1.7	1.4
Asian/Asian British: Pakistani or British Pakistani	0.5	0.7
Asian/Asian British: Bangladeshi, British Bangladeshi	0.1	0.2
Asian/Asian British: Chinese	0.5	0.5
Asian/Asian British: Other Asian	2.8	7.6
Black/African/Caribbean/Black British: African	0.6	1.2
Black/African/Caribbean/Black British: Caribbean	0.2	0.6
Black/African/Caribbean/Black British: Other Black	0.1	0.2
Other ethnic group: Arab	0.1	0.1
Other ethnic group: Any other ethnic group	0.2	0.5

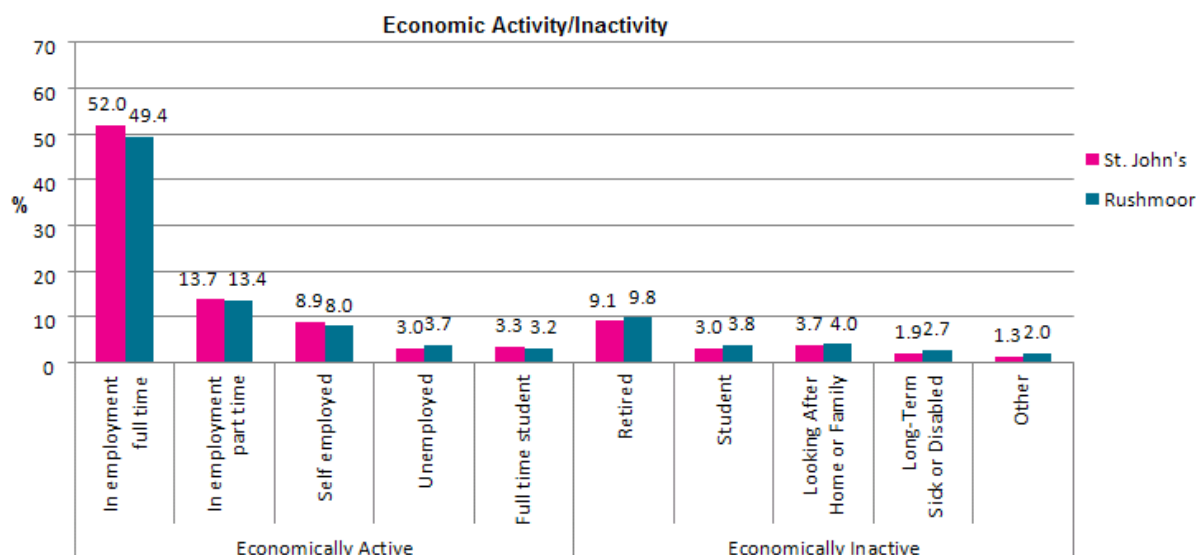
(Source: Office for National Statistics)

- **Housing:** A higher percentage of residents in St John's own their own homes, and less rent from social landlords (housing associations) and rent their homes privately , when compared to Rushmoor as a whole.



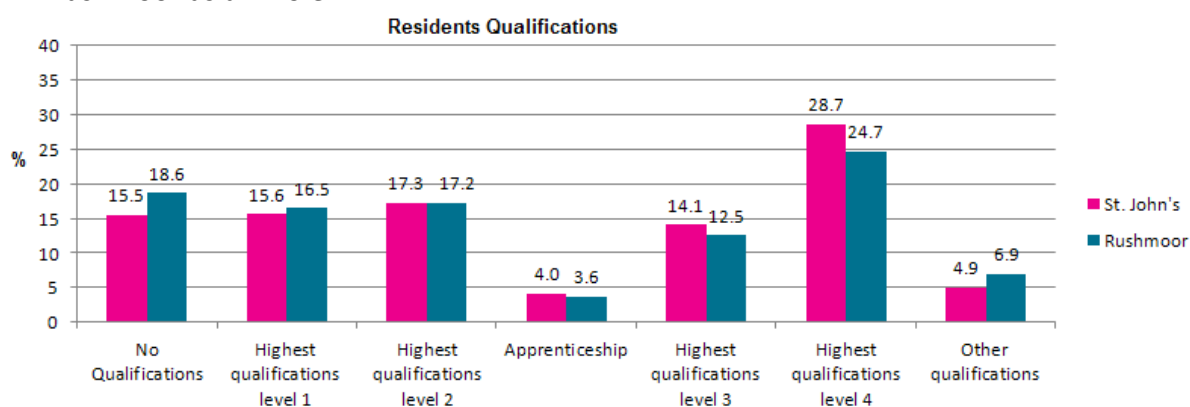
(Source: Office for National Statistics)

- **Economic Activity/Inactivity:** St John's ward has a slightly higher percentage of residents in full time employment, when compared to Rushmoor as a whole.



(Source: Office for National Statistics)

- **Qualifications:** A higher percentage of St John's residents have the highest level of qualifications, and a lower percentage have no qualifications when compared to Rushmoor as a whole.



Level 1 qualifications cover: 1-4 O Levels/CSE/GCSEs (any grades), Entry Level, Foundation Diploma, NVQ level 1, Foundation GNVQ, Basic/Essential Skills.

Level 2 qualifications cover: 5+ O Level (Passes)/CSEs (Grade 1)/GCSEs (Grades A*-C), School Certificate, 1 A Level/ 2-3 AS Levels/VCEs, Intermediate/Higher Diploma, Welsh Baccalaureate Intermediate Diploma, NVQ level 2, Intermediate GNVQ, City and Guilds Craft, BTEC First/General Diploma, RSA Diploma.

Level 3 Qualifications cover: 2+ A Levels/VCEs, 4+ AS Levels, Higher School Certificate, Progression/Advanced Diploma, Welsh Baccalaureate Advance Diploma, NVQ Level 3; Advanced GNVQ, City and Guilds Advanced Craft, ONC, OND, BTEC National, RSA Advanced Diploma.

Level 4 and above qualifications cover: Degree (BA, BSc), Higher Degree (MA, PhD, PGCE), NVQ Level 4-5, HNC, HND, RSA Higher Diploma, BTEC Higher level, Professional Qualifications (Teaching, Nursing, Accountancy).

Other Qualifications cover: Vocational/Work-related Qualifications, Foreign Qualifications (Not stated/ level unknown).

(Source: Office for National Statistics)

- **Health:** A slightly higher percentage of St John's residents reported very good health, when compared to Rushmoor as a whole.

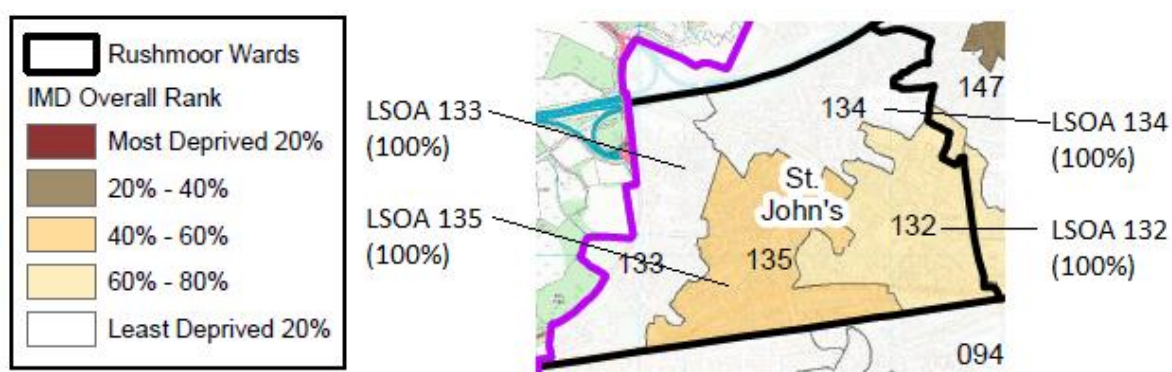
	Very Good Health	Good Health	Fair Health	Bad Health	Very Bad Health
St John's	55.0%	33.2%	8.9%	2.4%	0.6%
Rushmoor	50.1%	35.5%	10.8%	2.8%	0.8%

(Source: Office for National Statistics)

Deprivation breakdown

The Government's Index of Multiple Deprivation (IMD) 2019 provides a relative deprivation score for each small area in England, it covers a range of economic, social and housing issues. The overall score is calculated using data from seven domains. Most of indicator data has come from 2015 and 2016 and some of the data is from the 2011 Census. The Indices of Deprivation cover geographical areas that are called Lower-layer Super Output Area level (LSOA), of which there are 32,844 in the country. There are a total of 58 LSOAs in Rushmoor.

Unfortunately, LSOAs and the council's wards do not exactly line up. In St John's ward there are all or part of four LSOAs. The following map shows the number of the LSOAs in St John's ward and the approximate percentage of the LSOA in the ward. Each LSOA is ranked in order against all other LSOA in the country, where 1 is the most deprived and 32,844 is the least deprived.



LSOA Code	Approx % in Ward	Index of Multiple Deprivation (IMD) 2019	Income	Employment	Education, Skills and Training	Health Deprivation and Disability	Crime	Barriers to Housing and Services	Living Environment
132	100%	22351	20092	25580	15298	18666	9508	19829	27562
133	100%	30663	29480	32379	27694	30174	21546	12731	25204
134	100%	26453	24645	27731	20133	28052	25326	9317	20480
135	100%	18285	16858	16706	11809	20095	19828	9547	24878

For comparison purposes below is the mean average results for a LSOA in Rushmoor

Average	19887	18826	21461	16538	17925	16645	14986	21641
---------	-------	-------	-------	-------	-------	-------	-------	-------

St John's ward has no areas in the 20% most deprived in England.