

St Mark's ward information

Last updated: May 2021
Produced by: Policy and Communications
Contact: policy@rushmoor.gov.uk

Contents	Page
Local democracy	1
Map of St Mark's	2
Resident survey results	3
Ward population and makeup 2011	4
Deprivation breakdown	7

Local democracy

Rushmoor Borough Council ward councillors for St Mark's:

Member	Party	Year elected
Councillor Diane Bedford	Conservative	2021
Councillor Thomas Mitchell	Liberal Democrats	2019
Councillor Abul Koher Chowdhury	Conservative	2018

Member(s) of the County Council for St Mark's ward:

Member	Party	Year elected
County Councillor Adam Jackman	Conservative	2021

Member of Parliament for Aldershot Constituency:

Member of Parliament	Party	Year elected
Leo Docherty	Conservative	2019

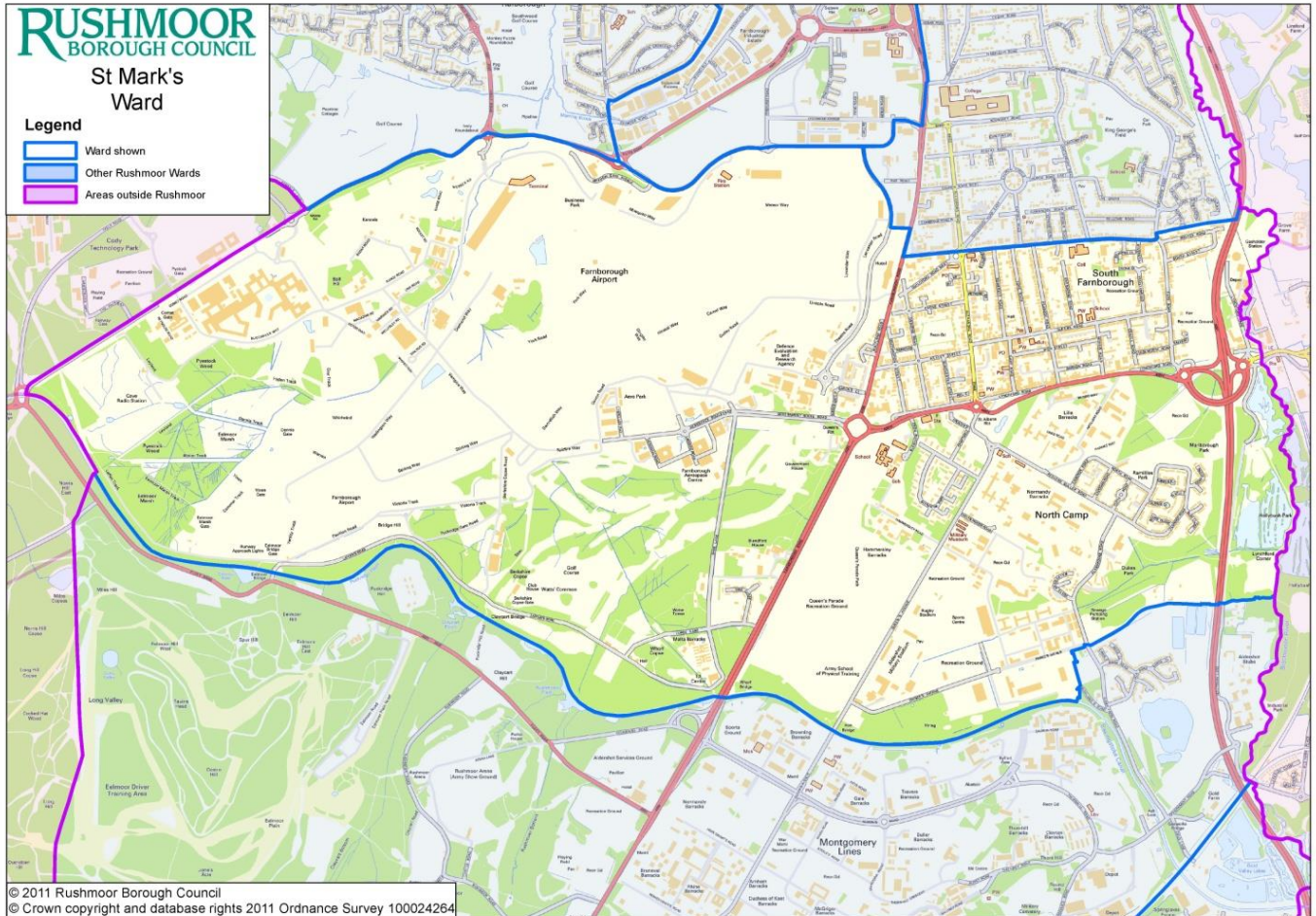
Election Turnout

Date	Type	Election Turnout for St Mark's ward
6 th May 2021	Local elections	33.6%

More information can be found on Rushmoor's web site at
<http://www.rushmoor.gov.uk/article/4610/St-Marks>

Map of St Mark's

St Mark's ward encompasses North Camp, as well as Farnborough Aerodrome and the military land to the north of the Basingstoke Canal.



Resident survey results

The last Rushmoor Borough Council residents' survey was carried out in 2018 with 1,046 surveys returned. The survey was an online survey and we know that 60 residents in St. Marks ward filled in the survey. Below is a summary of the results for St. Marks ward.

Satisfaction with Rushmoor (Aldershot and Farnborough) as a place to live (with 1 being very dissatisfied and 10 being very satisfied)

	All responses	Farnborough	St. Marks
Average score	5.84	6.34	6.73

Respondents from St. Marks ward have a higher satisfaction with Rushmoor as a place to live than the respondents from Farnborough and all respondents to the survey.

Top factor in making somewhere good to live

All responses	Farnborough	St. Marks
The level of crime	The level of crime	The level of crime

There is no difference in what the top factor is from the respondents from St. Marks ward, to the respondents from Farnborough and all the respondents to the survey.

Top factor that needs improving in the local area

All responses	Farnborough	St. Marks
Road and pavement repairs	Road and pavement repairs	Road and pavement repairs

There is no difference in what the top factor is from the respondents from St. Marks ward, to the respondents from Farnborough and all the respondents to the survey.

Satisfaction with Rushmoor Borough Council (with 1 being very dissatisfied and 10 being very satisfied)

	Rushmoor	Farnborough	St. Marks
Average score	6.32	6.59	6.98

Respondents from St. Marks ward have a higher satisfaction with the council than the respondents from Farnborough, and all the respondents to the survey.

Ward population and makeup 2011

The following data is from the 2011 Census

- **Population:** St Mark's ward has a population of approximately 7,327, which accounts for about 7.8% of the population of Rushmoor.
- **Age:** St Mark's has a slightly younger population, when compared to Rushmoor as a whole.



(Source: Office for National Statistics)

- **Religion:** There is not much difference between the religious beliefs of St Mark's residents, and Rushmoor as a whole.

Religion (%)	Christian	Buddhist	Hindu	Jewish	Muslim	Sikh	Other religion	No religion	Not stated
St Mark's	56.8	2.0	3.7	0.1	1.3	0.3	0.3	28.6	6.9
Rushmoor	57.8	3.3	3.4	0.1	1.4	0.2	0.4	26.4	7.0

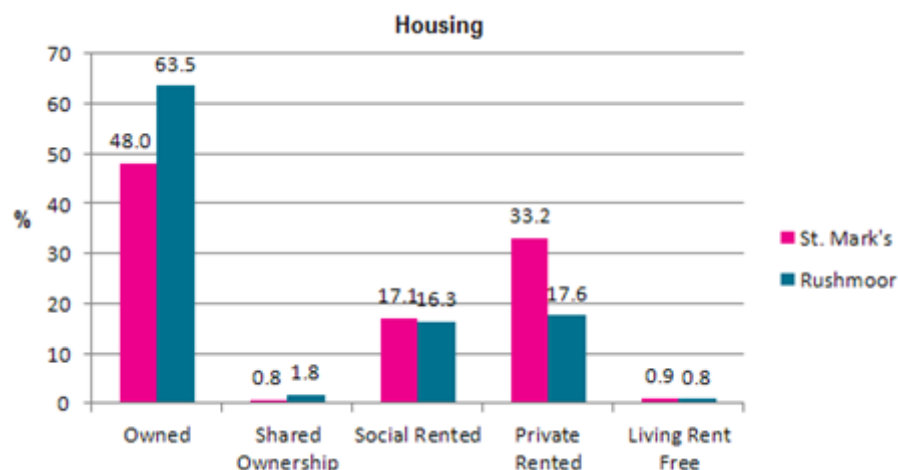
(Source: Office for National Statistics)

- **Ethnicity:** There is not much difference between the ethnic makeup of St Mark's residents, and Rushmoor as a whole.

Ethnicity (%)	St Mark's	Rushmoor
White: English/Welsh/Scottish/Northern Irish/British	80.0	80.5
White: Irish	1.1	0.8
White: Gypsy or Irish Traveller	0.2	0.2
White: Other	3.8	3.3
Mixed/multiple ethnic group: White and Black Caribbean	0.6	0.7
Mixed/multiple ethnic group: White and Black African	0.6	0.4
Mixed/multiple ethnic group: White and Asian	1.1	0.7
Mixed/multiple ethnic group: Other Mixed	0.5	0.5
Asian/Asian British: Indian or British Indian	1.4	1.4
Asian/Asian British: Pakistani or British Pakistani	0.8	0.7
Asian/Asian British: Bangladeshi, British Bangladeshi	0.2	0.2
Asian/Asian British: Chinese	0.6	0.5
Asian/Asian British: Other Asian	5.7	7.6
Black/African/Caribbean/Black British: African	1.8	1.2
Black/African/Caribbean/Black British: Caribbean	0.7	0.6
Black/African/Caribbean/Black British: Other Black	0.3	0.2
Other ethnic group: Arab	0.1	0.1
Other ethnic group: Any other ethnic group	0.5	0.5

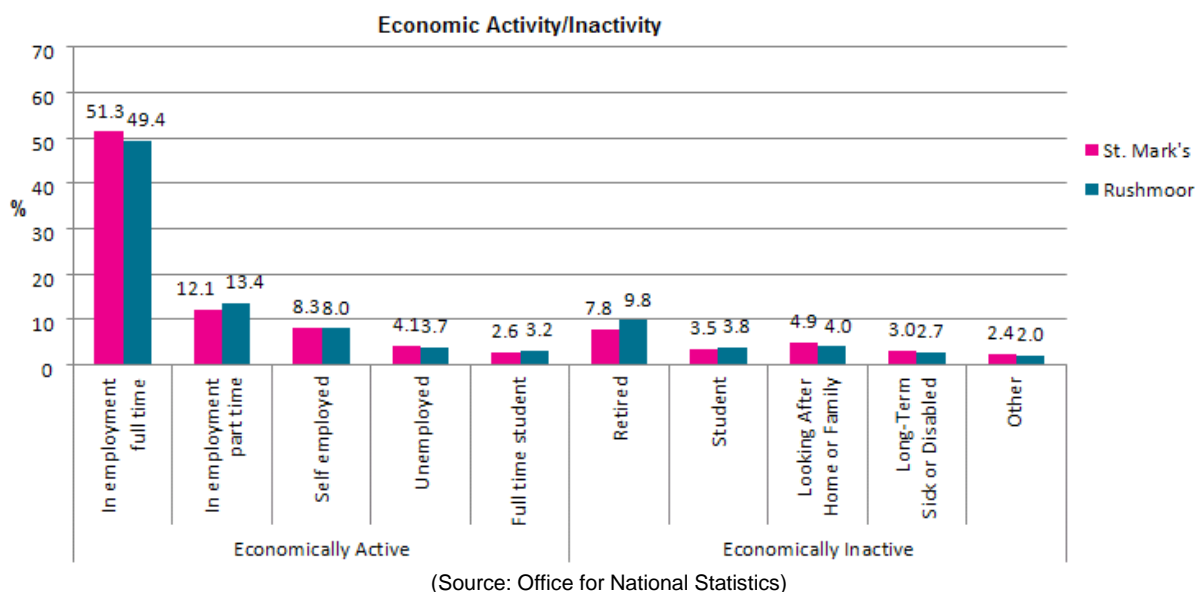
(Source: Office for National Statistics)

- **Housing:** A lower percentage of residents in St Mark's own their homes, and a higher percentage rent their homes from private landlords (this will include Army housing in the ward), when compared to Rushmoor as a whole

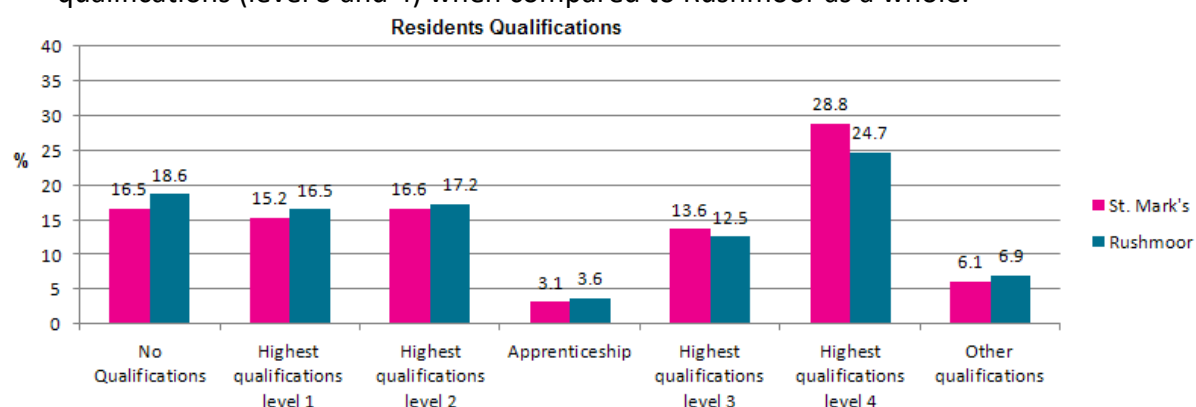


(Source: Office for National Statistics)

- **Economic Activity/Inactivity:** St Mark's ward has a slightly higher percentage of full time employed residents and a slightly lower percentage of retired people when compared to Rushmoor as a whole.



- **Qualifications:** A slightly higher percentage of St Mark's residents have higher qualifications (level 3 and 4) when compared to Rushmoor as a whole.



Level 1 qualifications cover: 1-4 O Levels/CSE/GCSEs (any grades), Entry Level, Foundation Diploma, NVQ level 1, Foundation GNVQ, Basic/Essential Skills.

Level 2 qualifications cover: 5+ O Level (Passes)/CSEs (Grade 1)/GCSEs (Grades A*-C), School Certificate, 1 A Level/ 2-3 AS Levels/VCEs, Intermediate/Higher Diploma, Welsh Baccalaureate Intermediate Diploma, NVQ level 2, Intermediate GNVQ, City and Guilds Craft, BTEC First/General Diploma, RSA Diploma.

Level 3 Qualifications cover: 2+ A Levels/VCEs, 4+ AS Levels, Higher School Certificate, Progression/Advanced Diploma, Welsh Baccalaureate Advance Diploma, NVQ Level 3; Advanced GNVQ, City and Guilds Advanced Craft, ONC, OND, BTEC National, RSA Advanced Diploma.

Level 4 and above qualifications cover: Degree (BA, BSc), Higher Degree (MA, PhD, PGCE), NVQ Level 4-5, HNC, HND, RSA Higher Diploma, BTEC Higher level, Professional Qualifications (Teaching, Nursing, Accountancy).

Other Qualifications cover: Vocational/Work-related Qualifications, Foreign Qualifications(Not stated/ level unknown).

(Source: Office for National Statistics)

- **Health:** A slightly higher percentage of St Mark's residents reported in the 2011 Census that they were in very good health, when compared with Rushmoor as a whole.

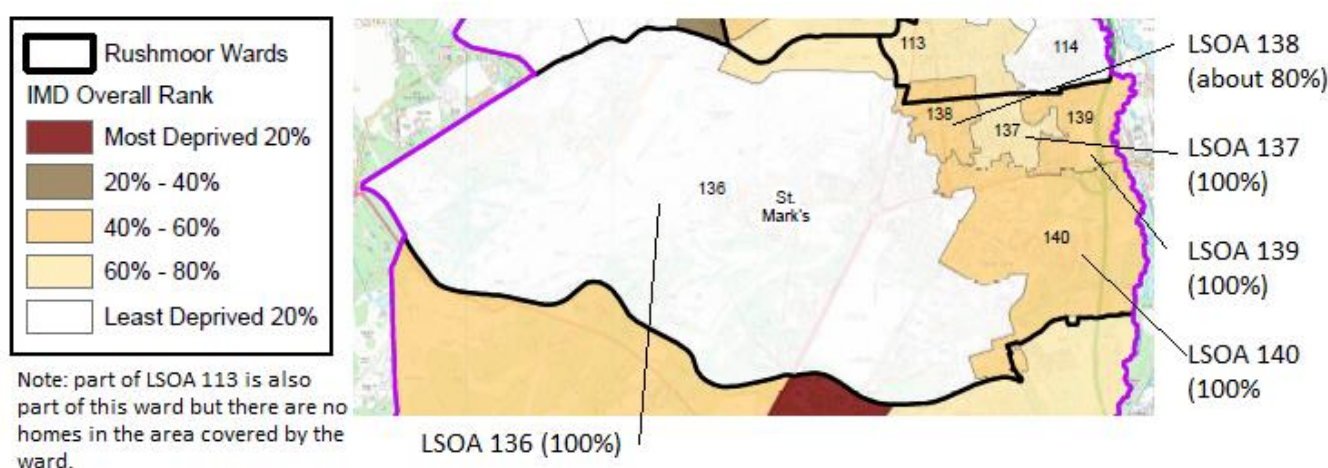
	Very Good Health	Good Health	Fair Health	Bad Health	Very Bad Health
St Mark's	52.3%	34.3%	10.2%	2.6%	0.6%
Rushmoor	50.1%	35.5%	10.8%	2.8%	0.8%

(Source: Office for National Statistics)

Deprivation breakdown

The Government's Index of Multiple Deprivation (IMD) 2019 provides a relative deprivation score for each small area in England, it covers a range of economic, social and housing issues. The overall score is calculated using data from seven domains. Most of indicator data has come from 2015 and 2016 and some of the data is from the 2011 Census. The Indices of Deprivation cover geographical areas that are called Lower-layer Super Output Area level (LSOA), of which there are 32,844 in the country. There are a total of 58 LSOAs in Rushmoor.

Unfortunately, LSOAs and the council's wards do not exactly line up. In St Mark's ward there are all or part of five LSOAs. The following map shows the number of the LSOAs in St Mark's ward and the approximate percentage of the LSOA in the ward. Each LSOA is ranked in order against all other LSOA in the country, where 1 is the most deprived and 32,844 is the least deprived.



LSOA Code	Approx % in Ward	Index of Multiple Deprivation (IMD) 2019	Income	Employment	Education, Skills and Training	Health Deprivation and Disability	Crime	Barriers to Housing and Services	Living Environment
136	100%	28933	26589	30170	21809	24773	25818	20157	17832
137	100%	20582	22826	17754	18344	14971	10321	25809	17222
139	100%	15882	15263	16733	12605	9232	21172	15914	14054
140	100%	15764	15284	20465	12446	10360	22473	5538	18475
138	80%	17376	14349	12118	22612	14166	18422	18285	18529

For comparison purposes below is the mean average results for a LSOA in Rushmoor

Average	19887	18826	21461	16538	17925	16645	14986	21641
---------	-------	-------	-------	-------	-------	-------	-------	-------

St. Mark's ward has no areas of multiple deprivation (in the 20% most deprived). LSOA 140 has a pocket of deprivation for the Barriers to Housing and Services domain.